



# Garden Notes

## Winter 2020



**Have a Gardening Question? Ask Us!**

## Welcome to our Winter Edition of Garden Notes.

It's a perfect day to curl up with your favorite cup of something hot, get nice and cozy and dive into our newest issue of Garden Notes. 2020 has been quite the year for everyone, including our Master Gardener program and volunteers. We miss our school gardens, community workshops, monthly meeting fun and the camaraderie we have in our program. We are busy planning our 2021 year now. While we anticipate several more months of virtual outreach, we are excited to offer you even more virtual classes this year!

We wish you and your family peace, health, happiness, and prosperity in the coming year. We hope you enjoy our winter edition of Garden Notes.

~ Happy Gardening ~

Marcy Sousa, Program Coordinator

**There's More to Moss Than Meets the Eye**



Moss. Friend or foe in the garden? It depends. Moss on a rooftop is not a welcome site for a homeowner. For some gardeners, moss is a delicate plant that provides serenity and beauty in a landscaped garden.

Mosses are small flowerless plants that typically form dense green clumps or mats usually in damp shady places. A closer look will reveal individual plants composed of simple leaves, generally only one cell thick, attached to a stem that may be branched or branchless. But there is much more behind that simple patch of green.

[Find Out  
More](#)



### Free Resources to Study for Another Dry Gardening Year

Since the drought of the late 1970's, the University of California researchers, UCCE San Joaquin Master Gardeners and many others have compiled an arsenal of resources and tools to help the California gardener cope with a Mediterranean climate and all too-frequent droughts. But studying this material can also be like drinking from a firehose, unless you know where to start. Here is a “rain chain” of ideas to help learn in small sips.

[Find Out  
More](#)



### Inspect Your Trees for Hazards

You should inspect healthy and unhealthy trees on a regular basis. Although some tree failures are not predictable and cannot be prevented, many failures can be prevented. Large trees have a greater hazard potential than small trees and should be inspected more frequently and in greater detail. Always make your inspections from the ground, do not climb the tree or use a ladder to improve your viewing perspective. If you suspect a hazardous condition, immediately contact your utility company and consult an arborist who has the equipment and training to conduct the inspection safely.

[Find Out  
More](#)





## Winter Garden Chores

[Find Out More](#)



## Plants of the Season

[Find Out More](#)



## Pests of the Season

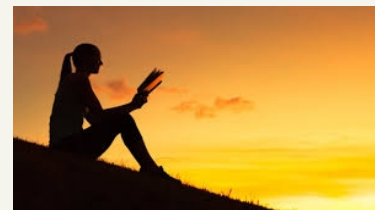
[Find Out More](#)



## Herb Study - Peppermint

Peppermint (*Mentha x piperita*) is an aromatic perennial plant of the Lamiaceae family that grows throughout Asia, Europe, and the United States. It is a natural hybrid of Water Mint (*Mentha aquatica*) and Spearmint (*Mentha spicata*), grows to a height of three feet, has green leaves with sharply serrated edges, and produces a light purple flower.

[Find Out More](#)



## Growing Knowledge Light Winter Reads

In the first few months of the year—that time between the hectic holiday season and busy spring gardening—I like to sit in a comfortable chair with a cup of something warm to drink next to a stack of good books. These books capture the nurturing quality in nature that has inspired poets and writers and just plain folks for centuries; they entertain, amuse, humble, and enlighten.

[Find Out More](#)



## Community Connections Jerry Roek Memorial Garden



## Horticultural Terms Tree Forms



## A Taste of the Season Recipes from the Garden

[Find Out  
More](#)

[Find Out  
More](#)

[Find Out  
More](#)



### **Help Desk Pre-emergent Herbicides for Weed; Safe to use in a home garden?**

Weeds are a constant companion for the home gardener, and they can be a significant pest after a wet winter and if the temperatures are right. Where do these weeds mysteriously come from, one may ask?

[Find Out  
More](#)



### **From the Garden Repurposed Garden Bugs**

Wintertime can slow work in the garden to a halt. Cool and rainy weather is not conducive to being outside. It is a good idea to have backup activities to help you through the tough times when the weather won't let you work in the garden.

[Find Out  
More](#)

## **Have a Gardening Question? Ask Us!**

**Master Gardener Helpline: 209-953-6111**  
**E-mail: [anrmgsanjoaquin@ucanr.edu](mailto:anrmgsanjoaquin@ucanr.edu)**  
**Website: [ucanr.edu.sjmg](http://ucanr.edu.sjmg)**

We are currently checking e-mails and phone messages remotely during the shelter in place. We ask for your patience as there may be a delay in response time from our volunteers.

[Find past editions of our newsletter here.](#)

